

Rubber Threshold Ramps can be used indoors and outdoors in a variety of locations, whether it's in your home, the office or the garden.

Pride Lifts & Ramps

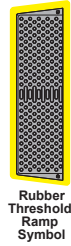
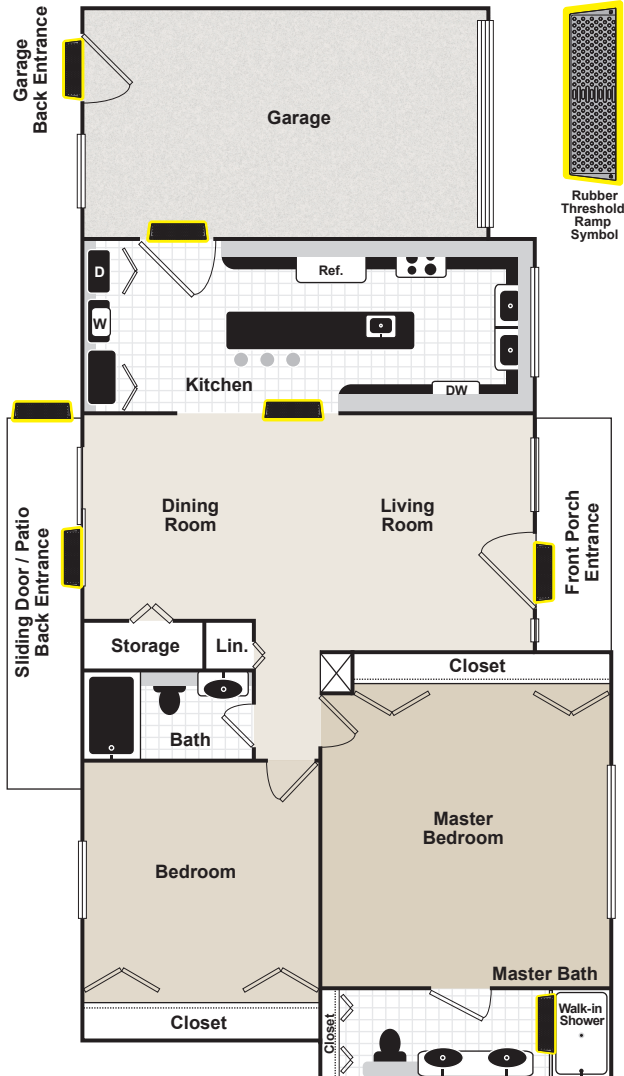
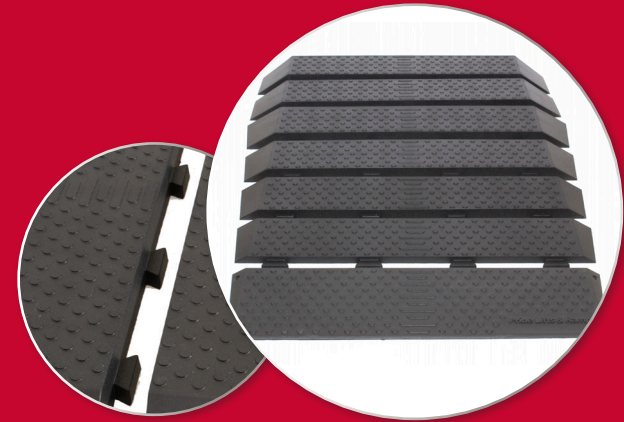
Pride[®]
Lifts & Ramps

MOBILITY MADE EASY.

Uses in home may include:

- At front and back entrance doors
- Garage to kitchen
- Kitchen to living room
- Walk-in showers

**Rubber
Threshold Ramps**



Rubber
Threshold
Ramp
Symbol

Dealer Sticker

Caution: This product is made from recycled natural rubber which may contain latex and could cause an allergic reaction in some individuals.

Pride[®]
Mobility Products Corp.
— LIVE YOUR BEST —

pridemobility.com |
(800) 800-8586 (U.S.) • (888) 570-1113 (Canada)

RUBBERTHRESHOLD-BR-08-17-16



**Rubber
Threshold Ramps**

Rubber Threshold Ramps

Rubber Threshold Ramps provide a durable, safe means of navigating uneven surfaces including small steps and doorways. A hidden dovetail locking system allows for easy installation and incremental ramp height adjustment of up to 4 inches. Modular design makes Pride® Rubber Threshold Ramps a practical and affordable accessibility solution for indoor and outdoor use.

- 850 lb. weight capacity
- Meets ADA slope requirements
- Constructed of high-impact recycled rubber for durability and long life
- Seven total pieces
- ½ increments starting from 1" to 4" height capability
- 36" of usable space
- Can be trimmed, cut or notched for a custom fit
- Slip resistant
- Easy to install
- Maintenance-free

The information contained herein is correct at the time of publication; we reserve the right to alter specifications without prior notice.

Rubber Threshold Ramps Specifications

RISE	LENGTH	USABLE WIDTH	OVERALL WIDTH	WEIGHT OF EACH PC.
1"	10.4"	36"	39"	10.2 lbs.
1.5"	6.9"	36"	41"	11.4 lbs.
2"	6.9"	36"	42.5"	13.2 lbs.
2.5"	7"	36"	44.2"	17.2 lbs.
3"	7.5"	36"	46"	22.6 lbs.
3.5"	7"	36"	46"	27.2 lbs.
4"	7"	36"	46"	28.6 lbs.

The Rubber Threshold Ramp has a maximum incline of 4° (7%), which meets the requirement established by the ADA.

